



Combination Hammers

Satisfy Professional's Needs

HR2811F/FT, HR2810/T 28mm (1-1/8")



SDS-Plus Shank

Rotary Hammer HR2800 28mm (1-1/8")

**Powerful and Comfortable Operation
with Compact Body**

Photo: HR2811F

Note : Tool does not come with bit

Powerful and Comfortable Operation

With Low vibration and Highest-in-class efficiency in drilling and chipping

Compact Body for Better Handling

L-shaped Motor Housing shortens each distance between Rear/ Side Handles and Bit Tip

▶ More compact than 24mm Rotary Hammers

314mm
(HR2800 / HR2810)



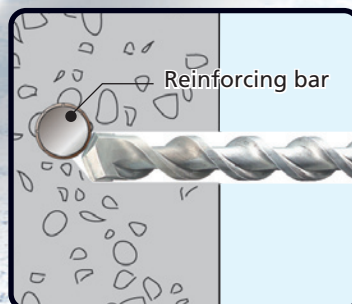
Powerful
800
W

▶ Lighter weight and more compact than 30mm Rotary Hammers



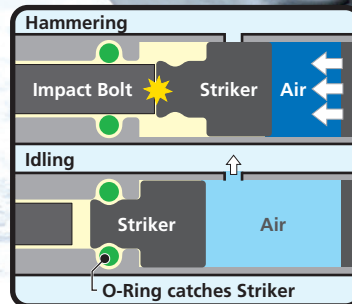
3.2kg
(HR2800 / HR2810)
(HR2811F)

Photo: HR2811F



Torque Limiter

Stops bit rotation when hitting reinforcement.



No Hammering when Idling

Ensures machine's long life.



One-Touch Sliding Chuck

for easy SDS-plus bit changes

on

3 MODE

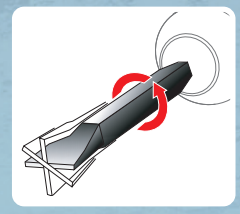
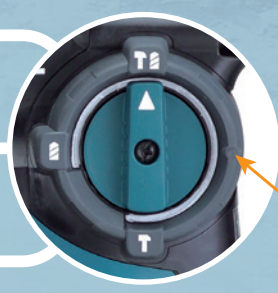


Reversing Switch
Operable by one hand

Rubberized Grip
Provides more control and comfort.

Bumper
Protects the surface of workpiece and machine.

- Hammering with Rotation**
- Rotation**
- Hammering**



Chisel rotates full 360 degrees with 40 different locking positions.



Vibration Absorbing Grip
Spring is mounted to absorb vibration.
(HR2811F / HR2811FT only)



LED Job Light
(HR2811F / HR2811FT only)



Quick Change Chuck
SDS-plus chuck can be replaced to keyless drill chuck in a second.
(HR2811FT / HR2810T only)



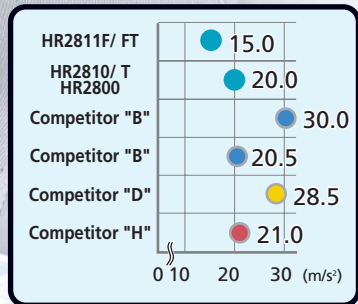
- HR2811F** Vibration Absorbing Grip LED Job Light
- HR2811FT** Vibration Absorbing Grip LED Job Light Quick Change Chuck

Photo: HR2811F



- HR2810**
- HR2810T** Quick Change Chuck

Photo: HR2810



Comparison of Vibration

2 MODE

- Hammering with Rotation**
- Rotation**



HR2800

Tool does not come with bit.



Photo: HR2810



Photo: HR2810

Accessories

Quick change drill chuck (Drill chuck set)

For Model: HR2811FT, HR2810T
Part No. 194079-2



Dust cup

Bit dia: 6-14.5mm Part No. 421342-3
Bit dia: 12-16mm Part No. 421664-1



Dust cup set

Part No. 194580-7



Dust extractor attachment

Part No. 193472-7



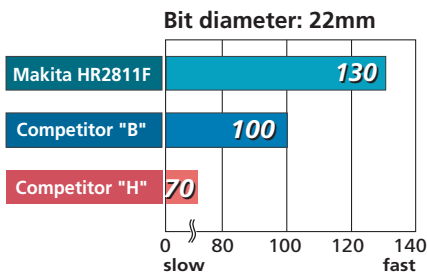
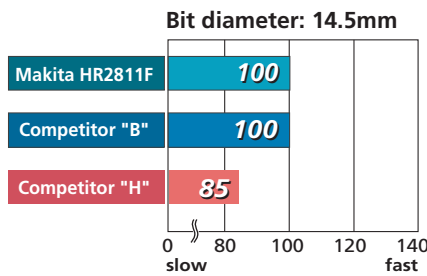
Comparison of Drilling Efficiency

Note: It may differ under some conditions.

Drilling

Note: Numbers in the charts below are relative values when the capacities of competitor "B" are indexed at 100.

Test conditions: Drilled in concrete with compressive strength of 40N/mm².



Chipping

Note: Numbers in the charts below are relative values when the capacities of competitor "H" are indexed at 100.

Test conditions: Chipped concrete with compressive strength of 40N/mm², and measured the amount of concrete removed.



Combination Hammers

HR2811F/FT, HR2810/T

325

Rotary Hammer

HR2800

325

	HR2811F	HR2811FT	HR2810	HR2810T	HR2800
Double Insulation					
Variable Speed					
Reversing					
Torque Limiter					
Dust Collecting					
SDS-Plus Shank					
Carrying Case					
Built-in Job Light (HR2811F, HR2811FT only)					
Continuous rating Input	800W	800W	800W	800W	800W
Capacity					
Concrete : (with diamond core bit)	80mm (3-1/8")	80mm (3-1/8")	80mm (3-1/8")	80mm (3-1/8")	80mm (3-1/8")
Concrete : (with T.C.T. bit)	28mm (1-1/8")	28mm (1-1/8")	28mm (1-1/8")	28mm (1-1/8")	28mm (1-1/8")
Steel :	13mm (1/2")	13mm (1/2")	13mm (1/2")	13mm (1/2")	13mm (1/2")
Wood :	32mm (1-1/4")	32mm (1-1/4")	32mm (1-1/4")	32mm (1-1/4")	32mm (1-1/4")
Impacts per minute (ipm)	0 - 4,500	0 - 4,500	0 - 4,500	0 - 4,500	0 - 4,500
No load speed (rpm)	0 - 1,100	0 - 1,100	0 - 1,100	0 - 1,100	0 - 1,100
Dimensions	320 x 89 x 225mm (12-5/8" x 3-1/2" x 8-7/8")	345 x 89 x 225mm (13-5/8" x 3-1/2" x 8-7/8")	314 x 89 x 225mm (12-3/8" x 3-1/2" x 8-7/8")	339 x 89 x 225mm (13-3/8" x 3-1/2" x 8-7/8")	314 x 89 x 225mm (12-3/8" x 3-1/2" x 8-7/8")
Net weight	3.3kg (7.3lbs)	3.4kg (7.5lbs)	3.2kg (7.1lbs)	3.3kg (7.3lbs)	3.2kg (7.1lbs)
Power supply cord	4.0m (13.1ft)	4.0m (13.1ft)	4.0m (13.1ft)	4.0m (13.1ft)	4.0m (13.1ft)

Standard Equipment Quick Change Drill Chuck (HR2811FT, HR2810T only), Depth Gauge, Side Grip (Tool does not come with bit.)

Items of standard equipment and specifications may differ by country or area.

Makita Corporation

3-11-8 Sumiyoshi-cho, Anjo, Aichi, 446-8502 Japan

PRINTED IN JAPAN Z23326-2 2007-08